

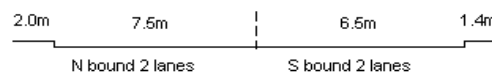
YEAR 2013

COVERAGE (B) STATION 2201

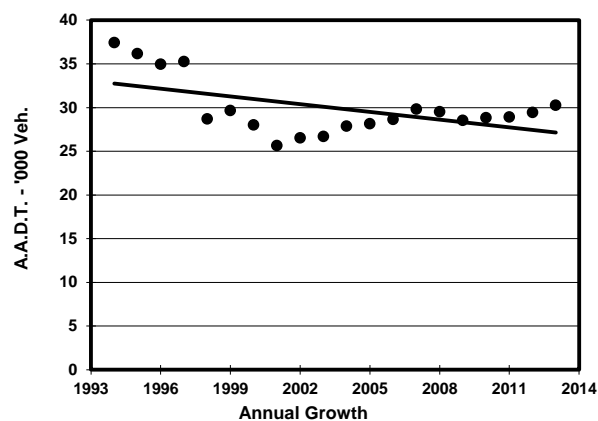
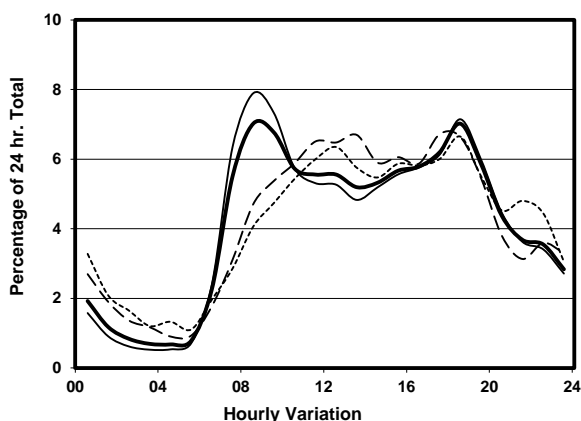
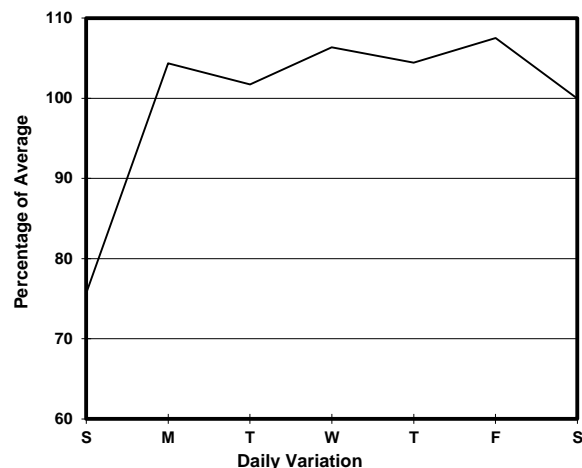
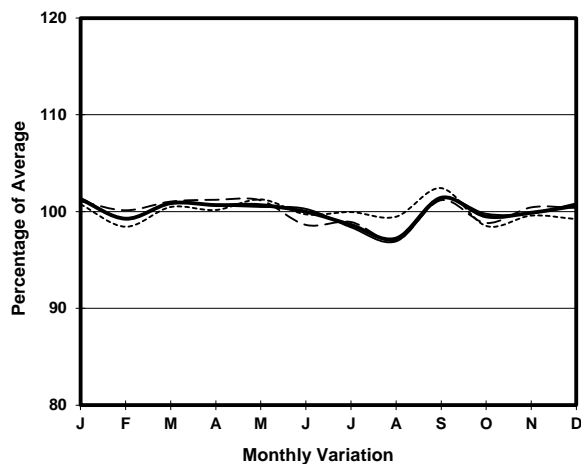
ROAD NETWORK MAJOR

ROAD TYPE PRIMARY DISTRIBUTOR

LINK POK FU LAM RD (from POKFIELD RD to MOUNT DAVIS RD)



## 1. TRAFFIC FLOW VARIATION AND GROWTH



## 2. TRAFFIC CHARACTERISTICS (BY DIRECTION)

Parameter	All - Day	Mon. - Fri.	Sat.	Sun.
<b>SOUTH BOUND</b>				
A.A.D.T.	9600	10070	9760	7970
R 12 / 24 - %	66.1	67.1	65.3	60.7
R 16 / 24 - %	86	87.4	82.4	81.4
AM Peak Hour	0900-1000	0900-1000	0900-1000	0900-1000
One-way flow at AM peak hour	640	740	480	320
T - % (AM)	-	11.3	-	-
PM Peak Hour	1800-1900	1800-1900	1700-1800	1600-1700
One-way flow at PM peak hour	610	650	620	500
T - % (PM)	-	7.9	-	-
Prop.of commercial vehicles - 16 hr.	-	10.5	-	-
<b>NORTH BOUND</b>				
A.A.D.T.	20660	22100	20890	15240
R 12 / 24 - %	73.8	75	72.2	67.3
R 16 / 24 - %	90.1	91.2	87.6	85.8
AM Peak Hour	0800-0900	0800-0900	0900-1000	0900-1000
One-way flow at AM peak hour	1560	1880	1170	790
T - % (AM)	-	6	-	-
PM Peak Hour	1800-1900	1800-1900	1800-1900	1800-1900
One-way flow at PM peak hour	1520	1650	1470	1060
T - % (PM)	-	10.4	-	-
Prop.of commercial vehicles - 16 hr.	-	8.7	-	-

## 3. OTHER INFORMATION AND COMMENT

**4. Vehicle classification and occupancy - Monday to Friday**

Time		Class of vehicle									
		Motor Cycle	Private Car	Taxi	Private LB	PLB	Goods veh.		Non Fr. Bus	Fr. Bus	
							Light	M & H		SD	DD
0700-0800	Pro	3.8	20.8	36.0	3.3	15.0	5.8	0.5	7.4	0.0	7.4
	Ocp	1.1	1.5	2.1	9.6	11.8	1.5	1.5	9.8	0.0	49.7
0800-0900 Peak hour	Pro	2.7	49.5	27.0	1.5	7.5	4.9	0.3	2.6	0.1	4.0
	Ocp	1.2	1.4	2.1	5.1	14.0	2.0	1.0	9.7	35.5	64.9
0900-1000	Pro	1.2	44.5	30.3	1.6	8.1	6.7	0.7	1.8	0.1	4.9
	Ocp	1.0	1.3	2.0	3.6	12.3	1.8	1.6	10.5	9.5	34.7
1000-1100	Pro	2.2	32.7	32.7	2.2	9.4	11.2	1.8	2.6	0.1	5.3
	Ocp	1.1	1.6	2.1	2.1	9.9	1.7	1.1	7.5	1.0	24.1
1100-1200	Pro	1.3	33.4	32.1	2.7	8.8	10.5	1.7	3.8	0.0	5.7
	Ocp	1.0	1.5	2.1	2.5	9.1	1.8	1.6	5.8	0.0	22.5
1200-1300	Pro	1.3	39.6	29.8	4.7	7.8	8.4	1.1	2.0	0.0	5.3
	Ocp	1.0	1.5	2.2	4.1	12.5	1.8	1.4	8.2	0.0	22.6
1300-1400	Pro	1.8	32.5	33.1	1.8	10.8	10.6	2.7	1.1	0.0	5.7
	Ocp	1.0	1.5	2.3	1.9	10.3	1.5	1.3	2.0	0.0	25.0
1400-1500	Pro	1.7	31.0	32.5	3.2	10.5	11.4	2.2	1.9	0.0	5.6
	Ocp	1.1	1.6	2.2	2.9	9.8	1.8	1.5	6.7	0.0	19.5
1500-1600	Pro	1.2	33.3	30.3	2.7	9.5	10.5	1.2	4.4	0.0	6.8
	Ocp	1.4	1.5	2.3	6.7	10.9	1.5	1.8	22.8	0.0	30.4
1600-1700	Pro	1.9	33.5	24.4	3.6	8.7	13.3	2.5	5.9	0.0	6.2
	Ocp	1.0	1.6	2.1	3.1	12.5	1.7	1.6	6.6	0.0	36.9
1700-1800	Pro	2.4	40.0	29.9	1.3	10.0	7.5	0.9	2.3	0.0	5.7
	Ocp	1.0	1.5	2.1	3.6	11.7	1.8	1.6	9.4	0.0	45.8
1800-1900	Pro	2.9	38.2	35.8	0.5	9.3	3.9	0.2	3.9	0.0	5.4
	Ocp	1.1	1.5	2.1	2.7	14.2	1.6	1.0	23.8	0.0	50.5
1900-2000	Pro	1.9	40.8	37.2	0.0	8.8	3.4	0.0	2.5	0.0	5.4
	Ocp	1.1	1.4	2.2	0.0	14.0	1.7	0.0	14.5	0.0	39.0
2000-2100	Pro	0.7	33.8	48.3	0.0	8.2	1.7	0.2	1.1	0.1	5.9
	Ocp	1.0	1.5	1.8	0.0	10.5	1.5	2.0	1.2	1.0	26.7
2100-2200	Pro	0.7	28.6	48.8	0.3	13.7	0.7	0.0	0.7	0.1	6.6
	Ocp	1.5	1.5	1.8	4.0	9.8	2.0	0.0	18.5	18.0	26.3
2200-2300	Pro	2.4	27.0	51.4	0.0	10.8	1.0	0.0	0.7	0.0	6.8
	Ocp	1.0	1.5	1.7	0.0	9.2	1.7	0.0	1.0	0.0	27.4
16 hours	Pro	1.9	36.3	33.9	1.8	9.5	7.1	1.0	2.8	0.1	5.6
	Ocp	1.1	1.5	2.1	4.1	11.5	1.7	1.5	11.2	15.7	35.0

**Legend**

- Pro.** Proportion of vehicles in % (Sum may not add up to 100% due to figure rounding)  
**Ocp.** Average occupancy of vehicles  
**M&H** Medium and Heavy